

GALVANISED COIL CASING LONG.

NOTE:-

IT IS THE CLIENTS RESPONSIBILITY TO ENSURE THAT THE STRUCTURE IS OF ADEQUATE STRENGTH AND CONSTRUCTION TO TAKE WEIGHT OF DOOR. (SOLID CONCRETE BLOCKS / MASONRY IS RECOMMENDED)

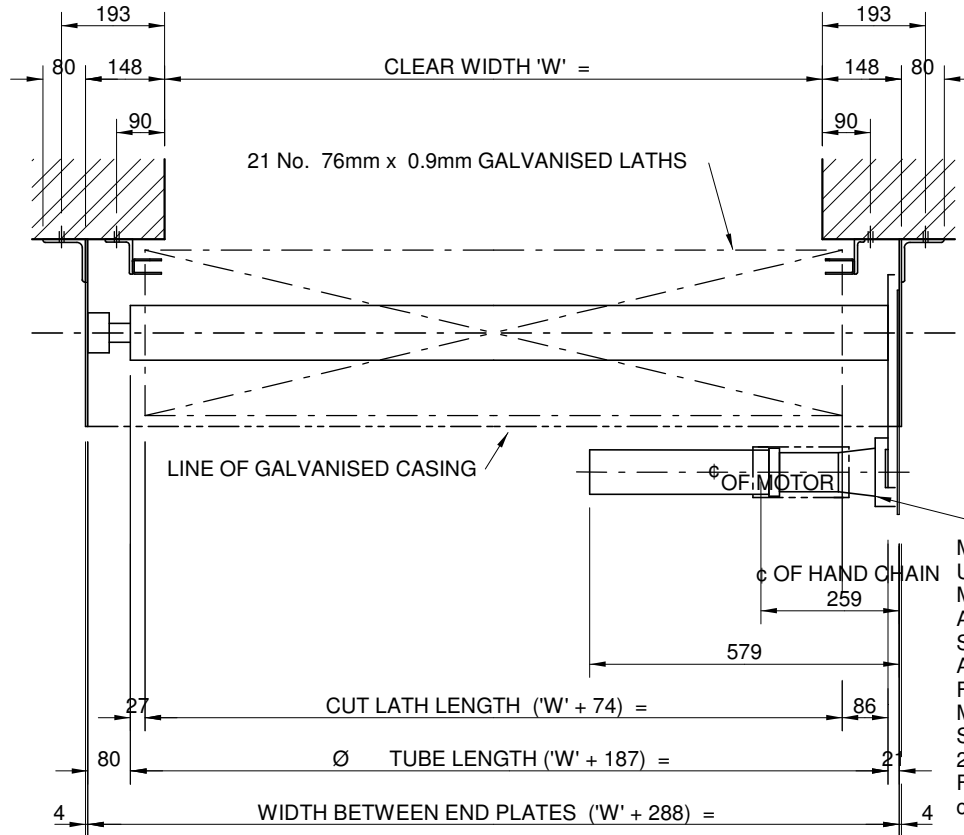
IF ROLLER SHUTTER BRACKETS ARE HOUSED ABOVE A SUSPENDED CEILING, CLIENT MUST PROVIDE THE FOLLOWING:

- a) VENT PANEL DIRECTLY BELOW FUSIBLE LINK.
- b) ACCESS PANEL DIRECTLY BELOW MANUAL UNIT

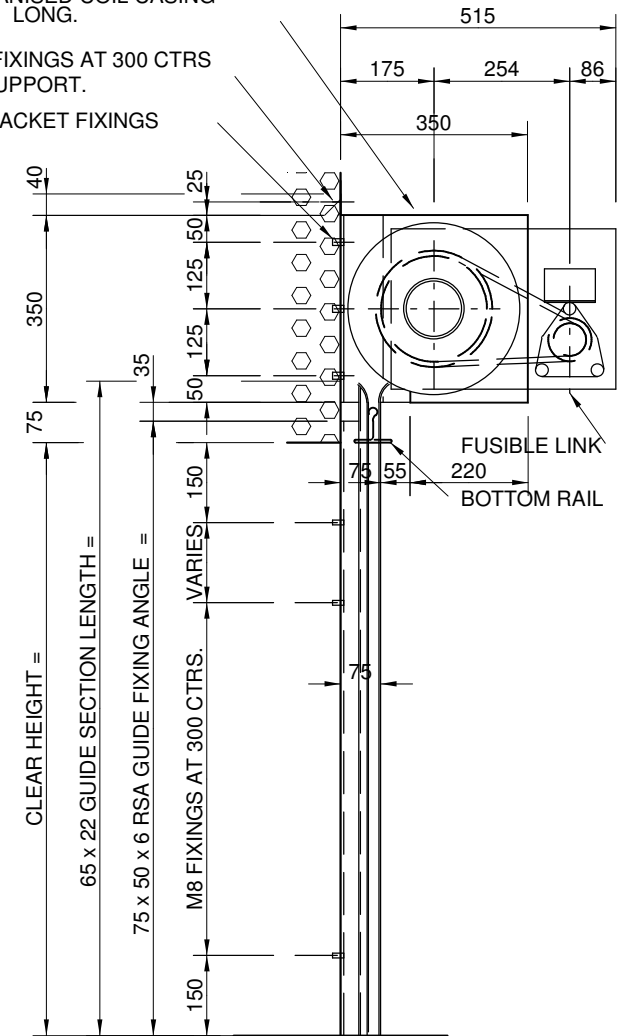
ELA ~ RELEASE UNIT OPTIONS

- ELA-0 SOLENOID RELEASE / AUTO RESET
 - ELA-1 FUSE RELEASE
 - ELA-2 TEST CABLE / SOLENOID RELEASE / MANUAL RESET
 - ELA-3 ELA-2 + FUSE BACKUP
 - ELA-4 TEST CABLE / SOLENOID RELEASE / AUTO RESET
 - ELA-5 ELA-4 + FUSE BACK UP
- (SOLENOID WILL RELEASE SHUTTER UPON RECEIPT OF 24v DC SIGNAL FROM ON SITE FIRE ALARM SYSTEM)

M6 CASING FIXINGS AT 300 CTRS IN CASING SUPPORT.
3 No. M12 BRACKET FIXINGS



PLAN



TYPICAL SECTION

MS1500 GEARED MOTOR UNIT WITH INTEGRAL BRAKE, MANUAL BRAKE RELEASE AND CONTROLLED DESCENT SPEED GOVERNOR AS STANDARD. ACTIVATED BY ELA-4 AND FAIL SAFE LOCAL HEAT MECHANISM OPERATING AT 68°C
SUPPLY:-
240V 1PH TERMINATING IN AN FUSED SPUR (BY OTHERS) c/w KEY SWITCH

REV	DESCRIPTION	DATE

DATE:		CONTRACT No:	
SCALE:			FS040508
DRN BY:		DRAWING No:	
CHKD BY:			5600100R

WELDING ENGINEERS (MERSEY) LTD.
UNIT 2, 3 & 4 NAVIGATION TRADING ESTATE,
BOWER STREET, NEWTON HEATH,
MANCHESTER, M40 2AR.
TEL No: 0161 205 2797 FAX No: 0161 205 4032

TITLE:
GENERAL ARRANGEMENT for
1 No. 4 HOUR FIRE RESISTING
ROLLER SHUTTER - DOOR No.

CLIENT: